

Updating Firmware on the Dell Laser Printer MFP 1815dn

NOTICE: Do not turn off your printer or computer, or disconnect any cables during this operation. Doing this will corrupt the memory and the printer will be permanently damaged.

USB-Connected Printers

Dell 1815dn Firmware information

Firmware zippack name : R126886.exe
Firmware File Name : **Dell1815dn_V1.03.02.06_AutoUpgrade.exe**

1. Double-click the new icon on the desktop labeled R126886.EXE.
2. The Self-Extractor window appears.
3. Click OK or Continue.
4. The Self-Extracting Driver Installation window appears and prompts to extract files to C:\DELL\DRIVERS\R126886.
5. Leave all of the default settings and click Unzip or OK. If the directory doesn't exist, you'll be prompted to create one. Click Yes.
6. A Self Extractor window appears and indicates C:\DELL\DRIVERS\R126886 files were extracted.
7. Click OK.
8. Follow the on-screen installation instructions in the window.

Steps to upgrade Dell 1815dn USB Connected Printer

1. Locate the file name "**Dell1815dn_V1.03.02.06_AutoUpgrade.exe**" typically this should be located at C:\DELL\DRIVERS\R126886 if not select the location where you downloaded the file.
2. Connect your PC to Dell1815dn via USB.
3. Double-Click the "**Dell1815dn_V1.03.02.06_AutoUpgrade.exe**" icon to launch the Firmware Update Utility.
4. When the Firmware Update Utility launches, select the "Local (USB)" option. See Figure 1.

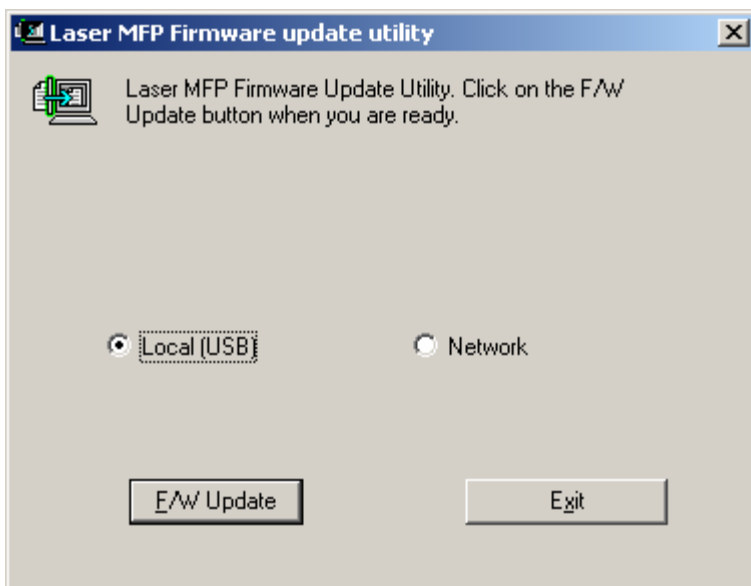


Figure 1

5. Click the "F/W Update" button.
6. At this point, the utility will begin to download the firmware to your printer. See Figure 2.

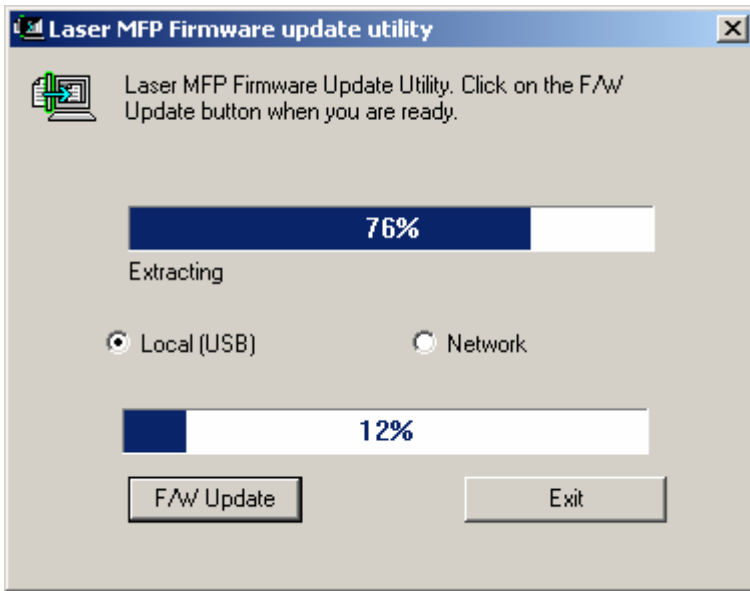


Figure 2

7. Once the firmware has been sent, a message stating, "Update Complete!" will be displayed. See Figure 3.

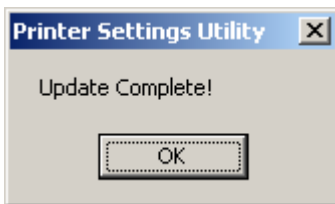


Figure 3

WARNING: Even though the "Update Complete!" message is displayed on your computer, the printer update is not fully completed until the printer has rebooted itself and "Ready" message is displayed on the operator panel of your printer.

The update may take several minutes and during this time, do not turn off your printer or computer or disconnect any cables during the update process. Doing this will corrupt the memory and the printer will be permanently damaged.

8. The printer re-booted and the LCD panel shows "Ready" message.
9. You have successfully completed the FW upgrade.

Network-Connected Printers

Dell i-drive Firmware download information

Firmware File Name : Dell1815dn_V1.03.02.06_smdall.hd

Steps to upgrade Dell 1815dn Network Connected Printer

1. Download the “Dell1815dn_V1.03.02.06_smdall.hd ” file from support site on www.dell.com on the desktop of the system that is connected to Dell1815dn through network.
2. Find the IP address of your printer using the following steps:
 - a. Press the “Menu” button on the printer operator panel and navigate to “Reports”.
 - b. Use the arrow keys and scroll to “System Data”.
 - c. Press the “Select” (✓) button to print the system data report. The printer’s IP address appears near the bottom of the page.
3. Open up your internet browser and key in the IP address of your printer. Click on “Printer Settings” link. See Figure 4.

Dell Laser MFP 1815dn
IP Address: 192.166.150.244
Contact: Administrator
Location:

Operator Panel Display - Help

Ready-Toner 15%
SCAN [COPY] FAX

Printer Status - Refresh

Toner Level ~ 15%

Paper Input Tray	Status	Capacity	Size	Type
Tray 1	OK	250	Letter	Plain Paper
Bypass Tray	Empty	50	Letter	Plain Paper

Printer Type: Monochrome Laser
Speed: Up to 27 Pages Per Minute in letter
Toner Cartridge Type: Standard Capacity

Printer Settings (circled in red)

Figure 4

4. Then click on the "Update Print Server Firmware". See Figure 5.

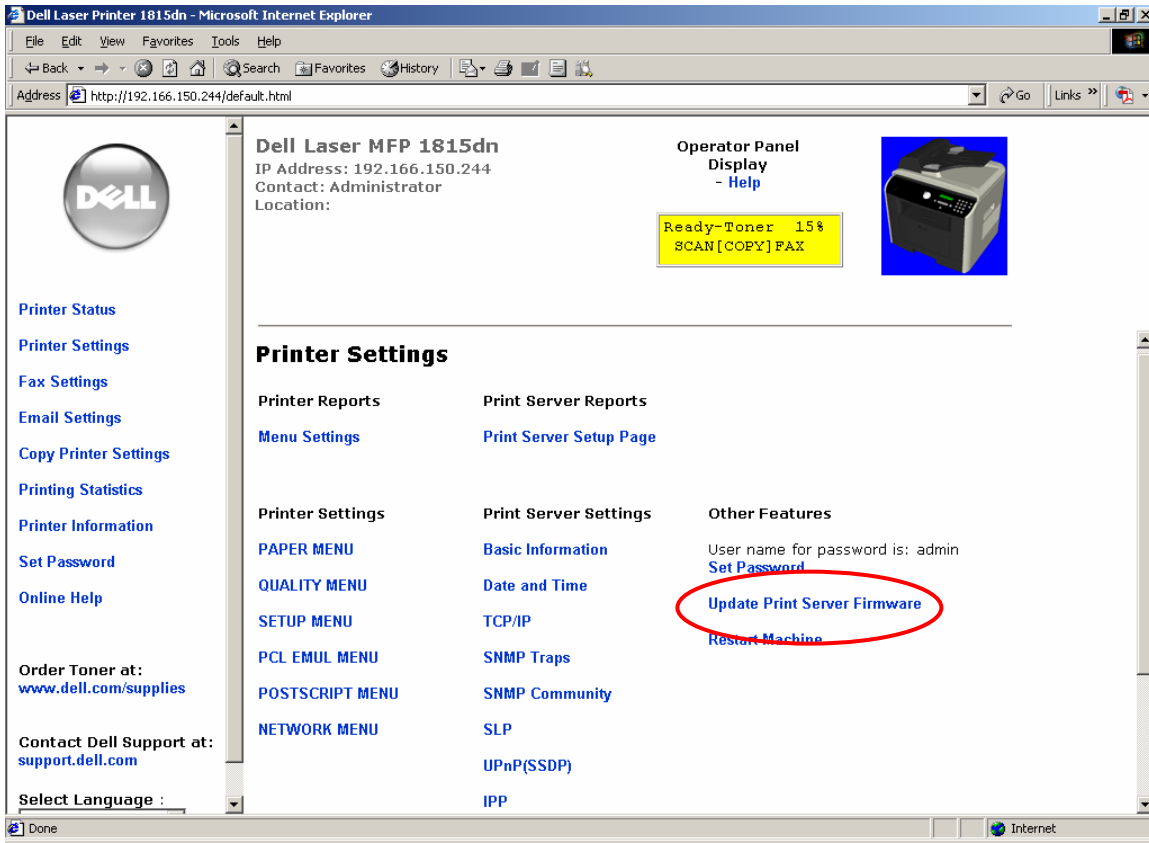


Figure 5

5. After clicking on the link, it will prompt you to enter your printer's network password. The user name is admin, and by default, the password is 4455. Click OK after entering. See Figure 6.

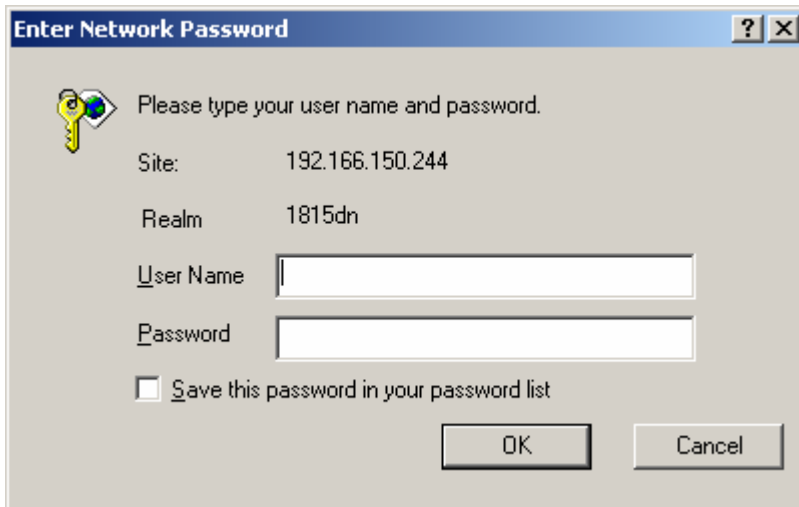


Figure 6

6. After clicking on OK, you will see the Update Firmware page. Click on Browse to locate your "Dell1815dn_V1.03.02.06_smdall.hd" file. See Figure 7.

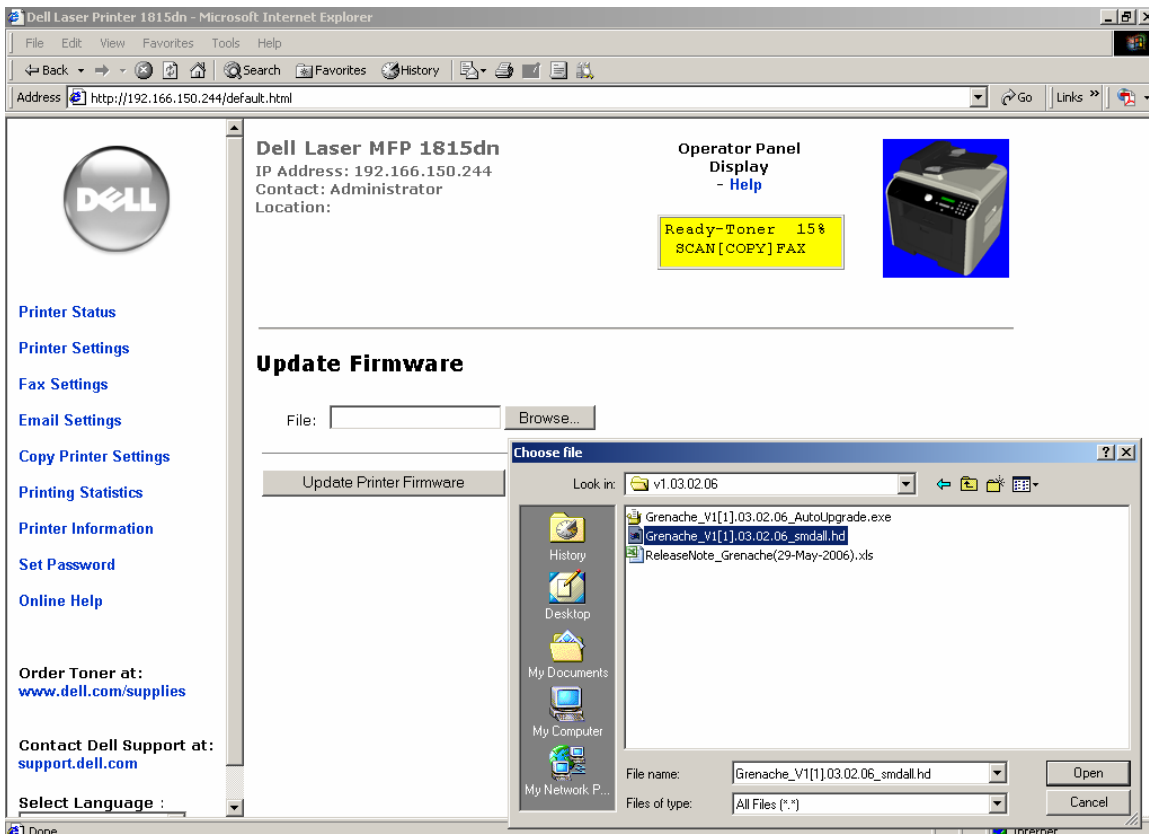


Figure 7

7. After locating your firmware, click on the Update Printer Firmware button. You should see the Flash Upgrade message. See Figure 8.

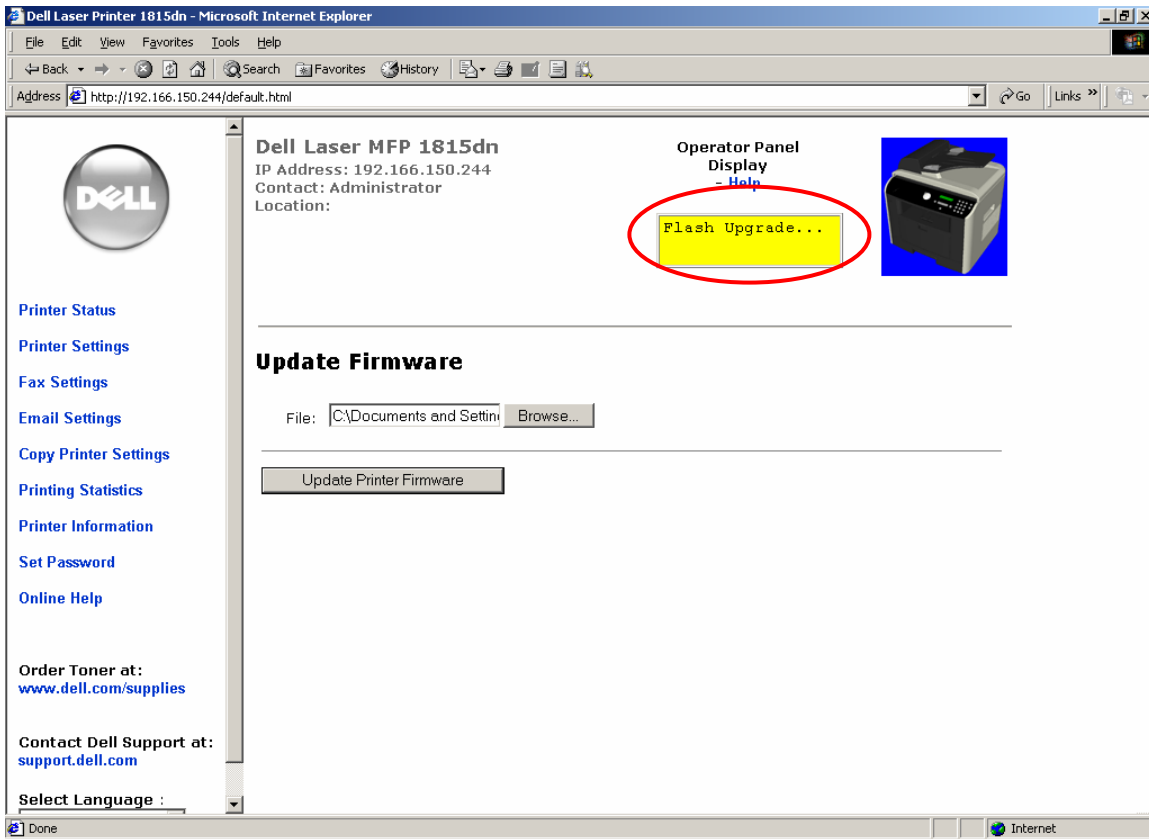


Figure 8

WARNING: The printer update is not fully completed until the printer has rebooted itself and “Ready” message is displayed on the operator panel of your printer.

The update may take several minutes and during this time, do not turn off your printer or computer or disconnect any cables during the update process. Doing this will corrupt the memory and the printer will be permanently damaged.

8. The printer re-booted and the LCD panel shows “Ready” message.
9. You have successfully completed the FW upgrade.
